

A Lab-on-Chip System for direct SNP sensing from human blood

Ichiro Yamashita^{1,3}, Paolo Fiorini²

¹Advanced Technology Research Laboratory, Panasonic corp.
3-4 Hikaridai, Seika-cho, Soraku-gun, Kyoto 619-0237, Japan

²Imec, Kapeldleeff 75, B-3001, Leuven, Belgium

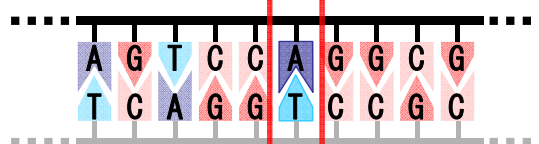
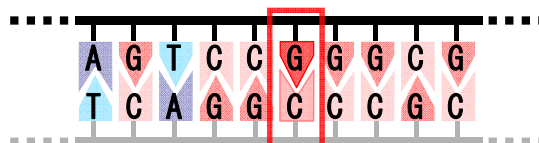
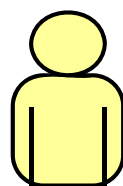
³Nara Institute of Science and Technology, 8916-5 Takayama-cho Ikoma

1

What is SNP

2

One DNA alternation can affect people's sensibility against drugs



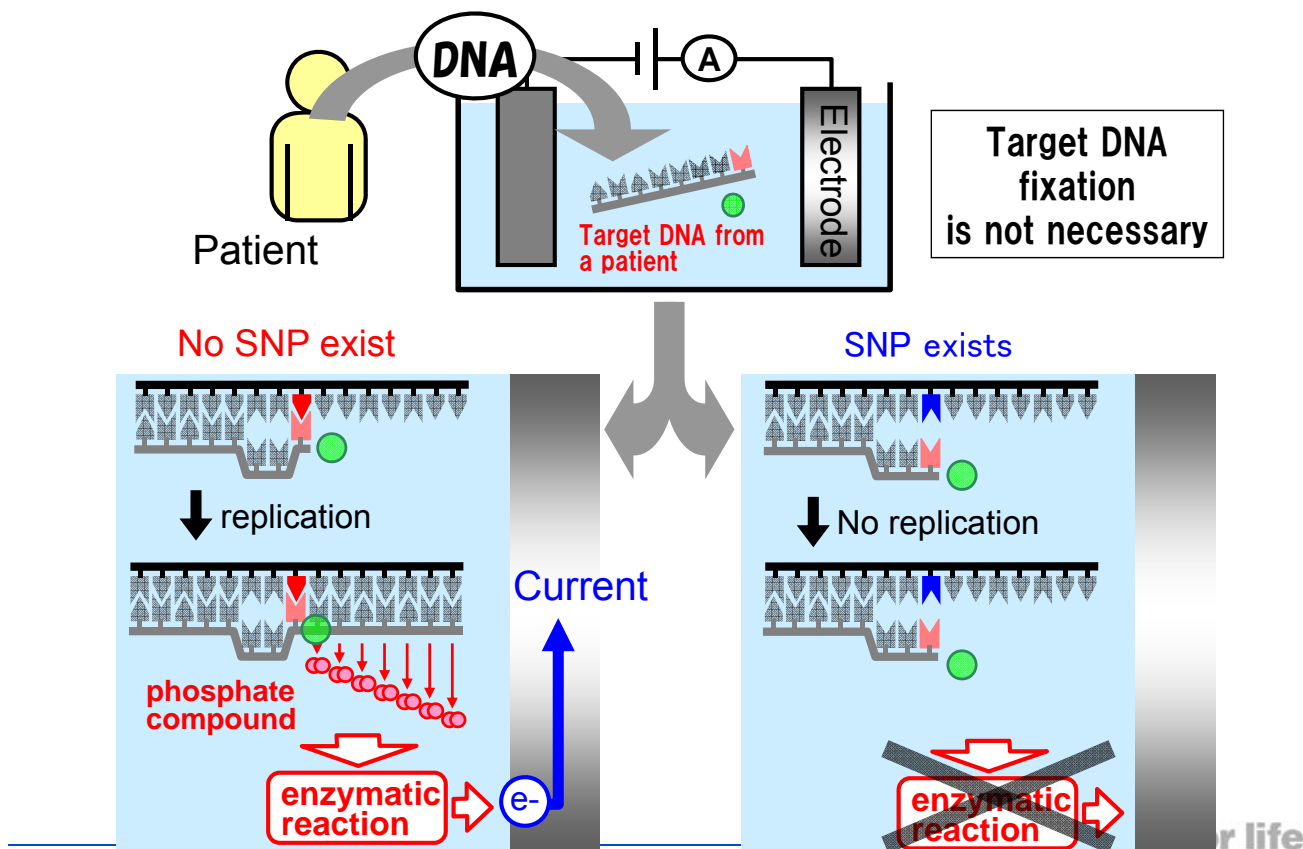
SNP

Single Nucleotide
Polymorphism

predisposition to diseases,
difference in reaction on drugs
(ie. adverse side effects), etc

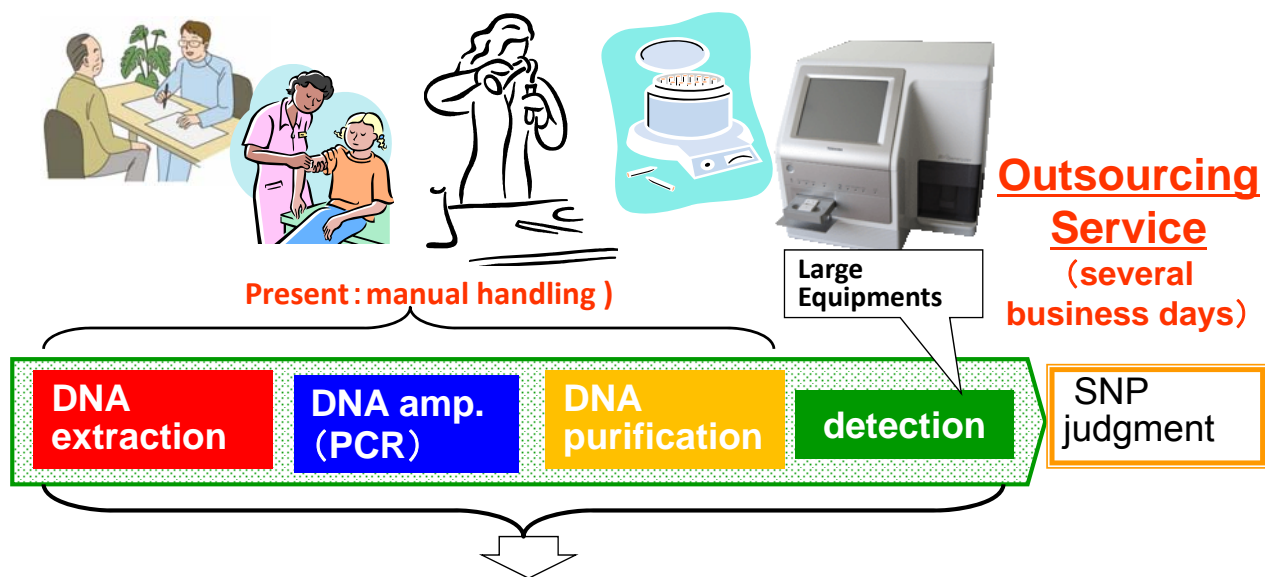
SNP sensor by Panasonic

3



Easy and fast detection of SNP

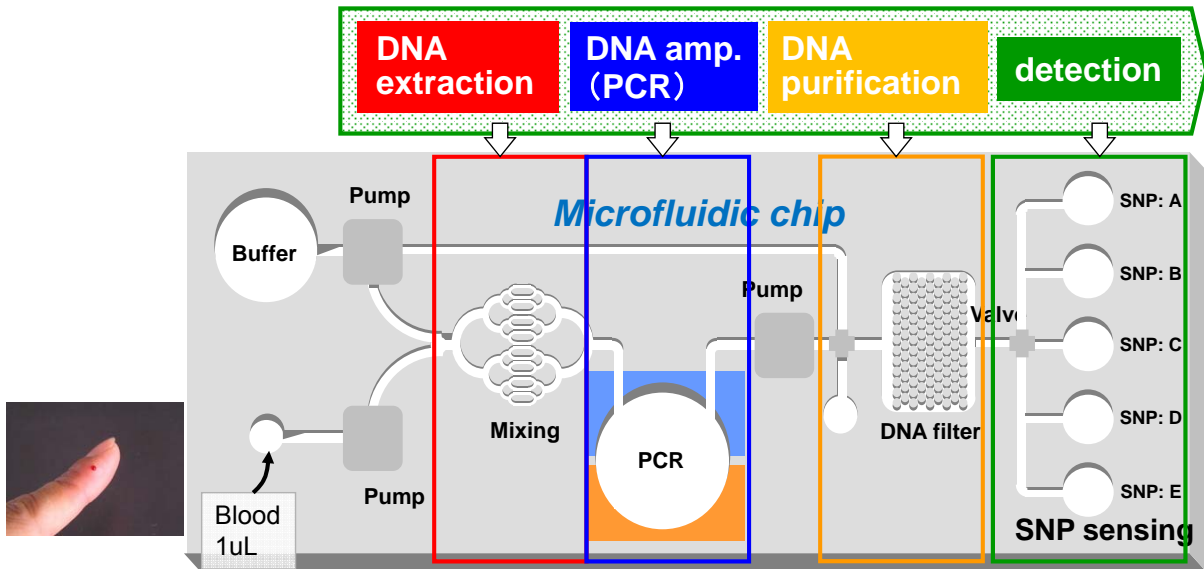
4



Our target is SNP-detection from blood less than 1 hour with small one-chip.

SNP Detection chip

5



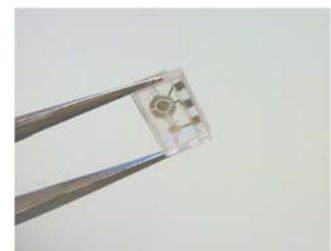
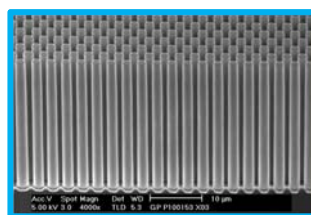
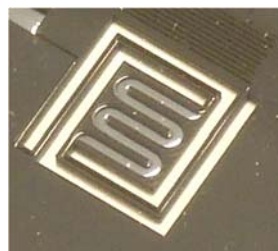
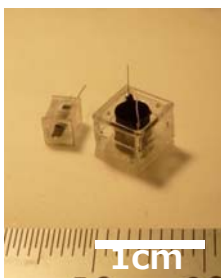
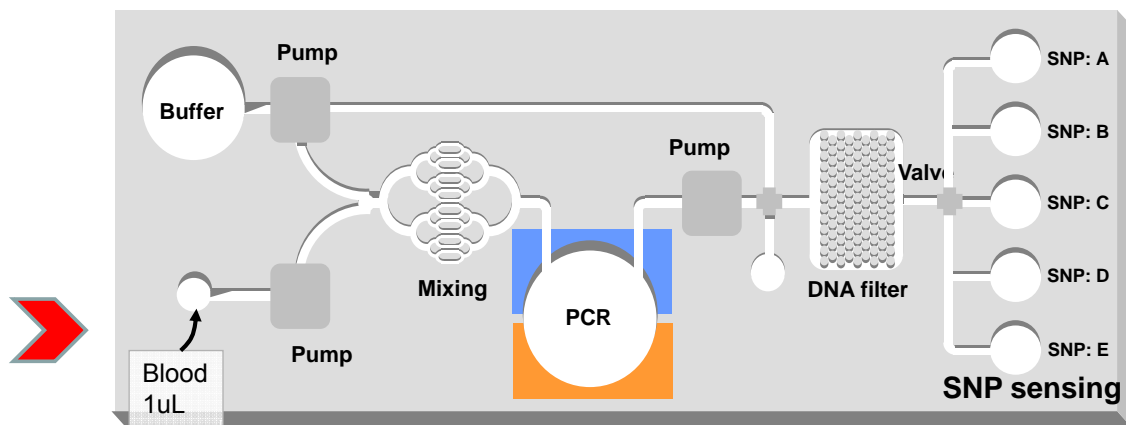
Rapid genotyping diagnostic on chip system

- Automated DNA extraction from blood
- Output diagnostic results within 1 hour

Panasonic ideas for life

SNP Detection chip

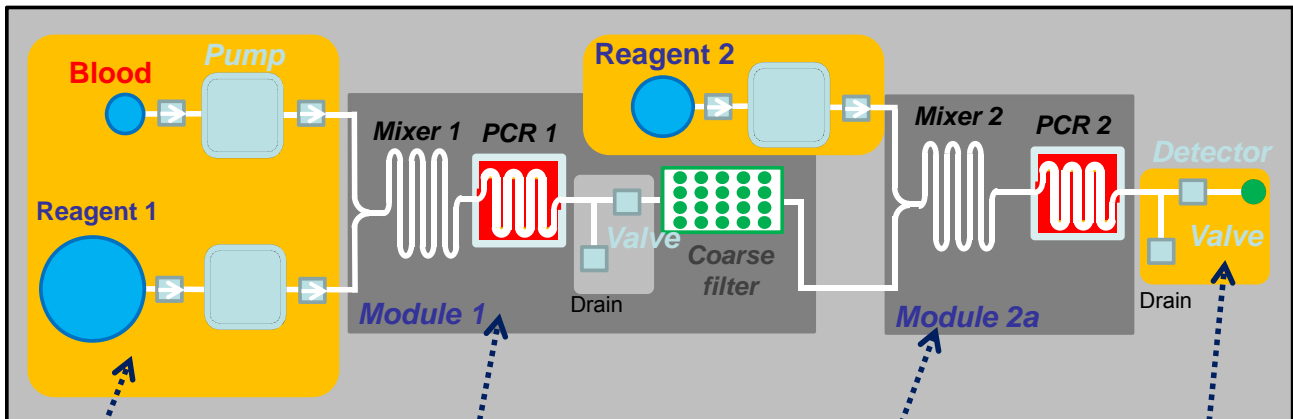
6



Panasonic ideas for life

Single SNP Detection chip details

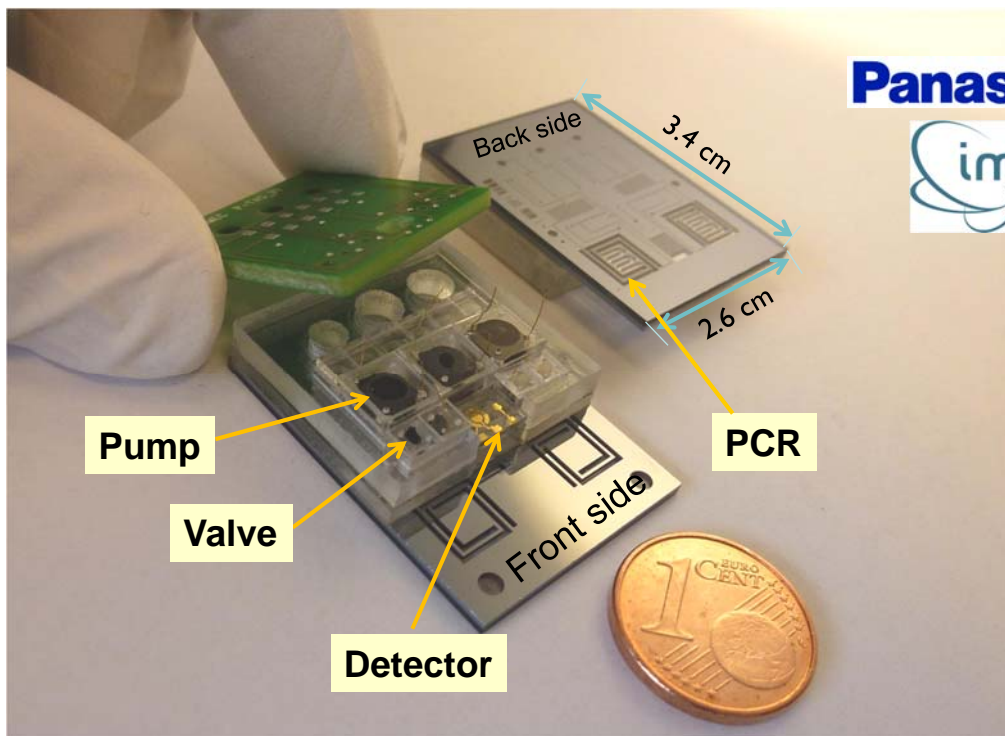
7



Panasonic ideas for life

Single SNP Detection Chip

8

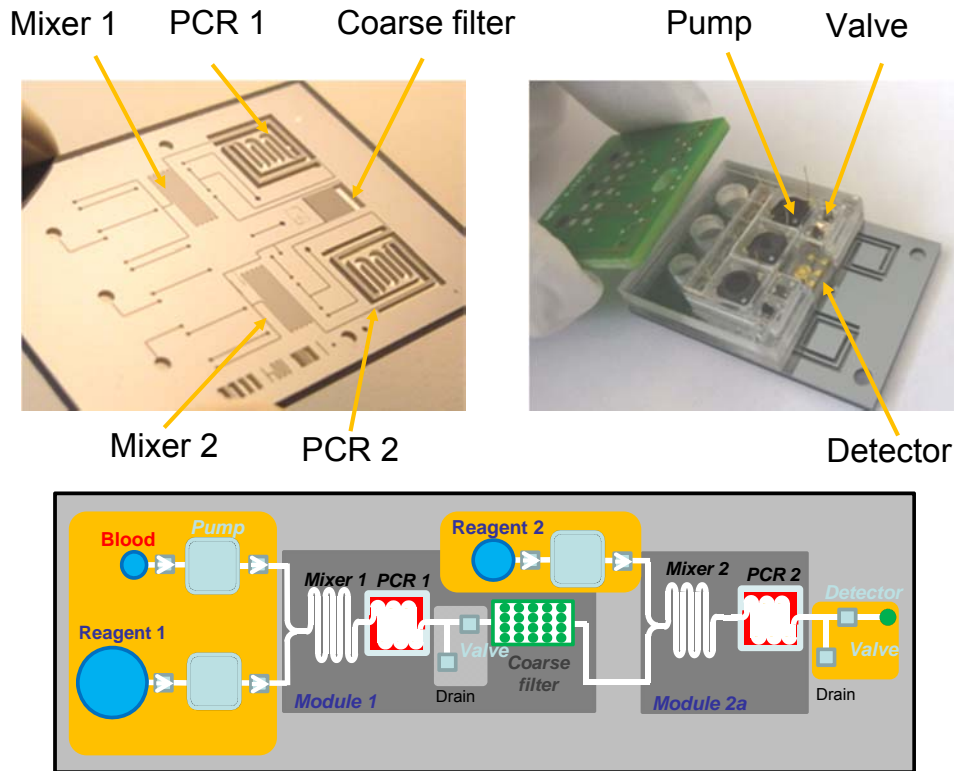


Panasonic ideas for life

8

Single SNP Detection device

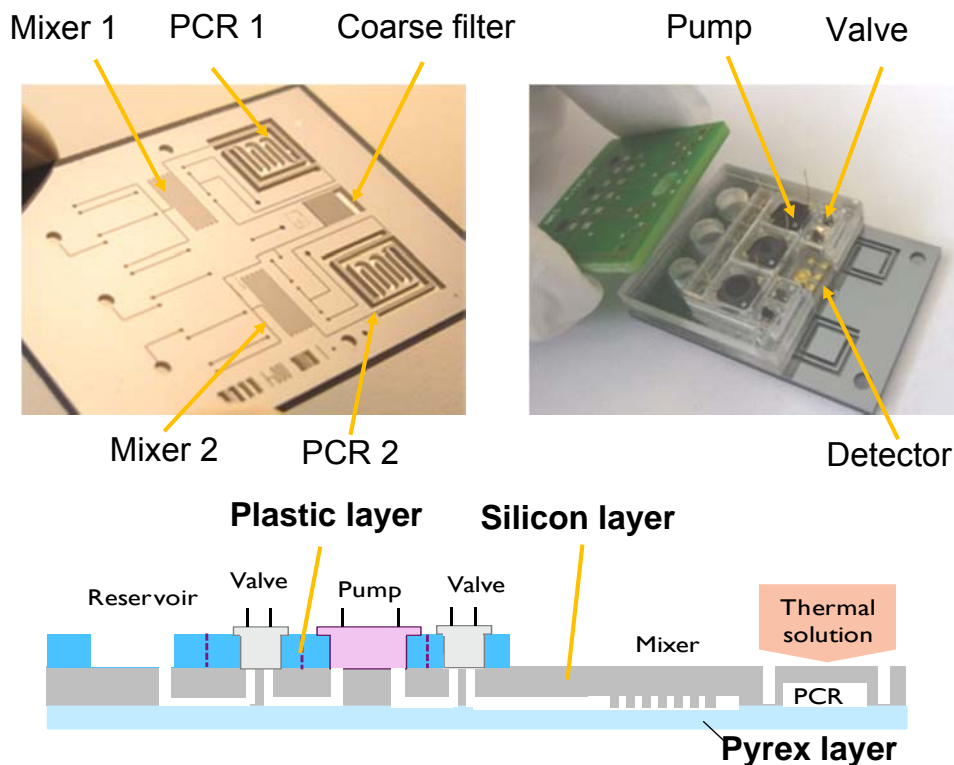
9



Panasonic ideas for life

Single SNP Detection device

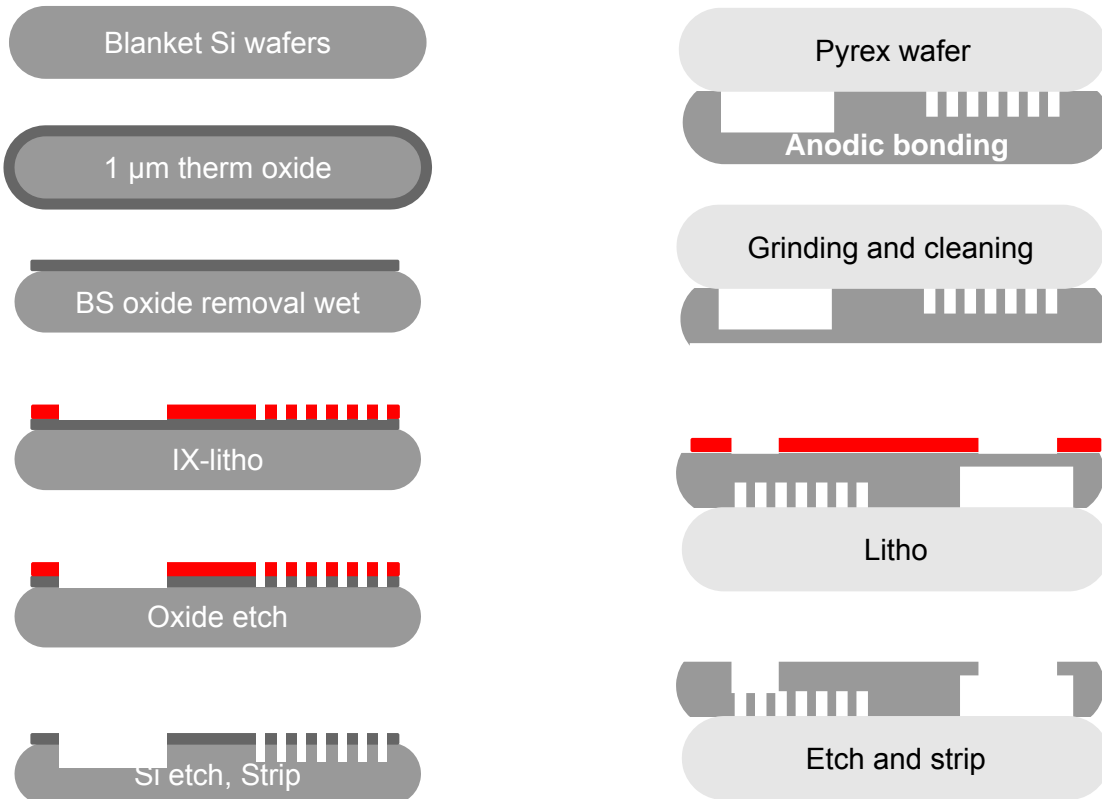
10



Panasonic ideas for life

Fabrication SSD (Process flow)

11

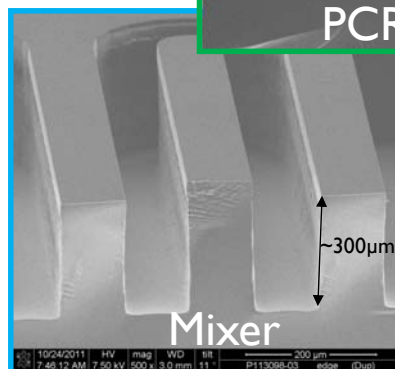
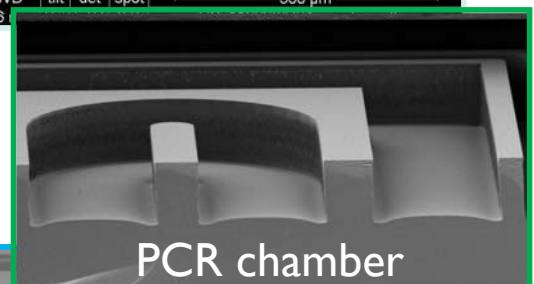
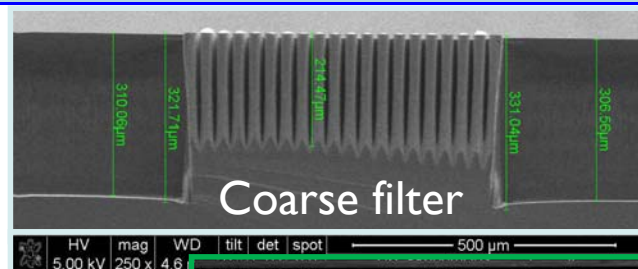


Panasonic ideas for life

11

Fabrication SSD (Results)

12



Panasonic ideas for life

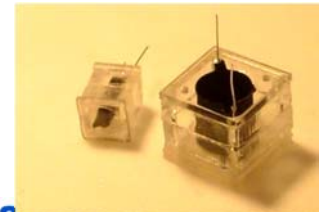
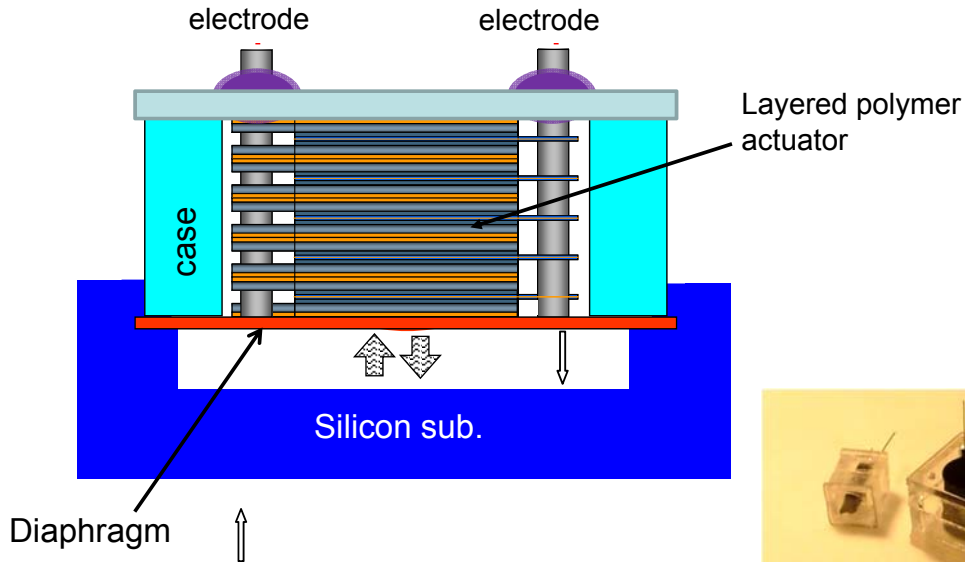
12

The newly developed pump unit

13

- Operation pressure 3MPa
- 1.5V battery drive
- Maximum generation pressure 30MPa

Pumping action

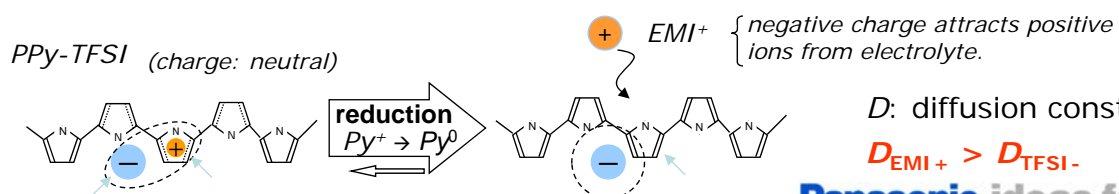
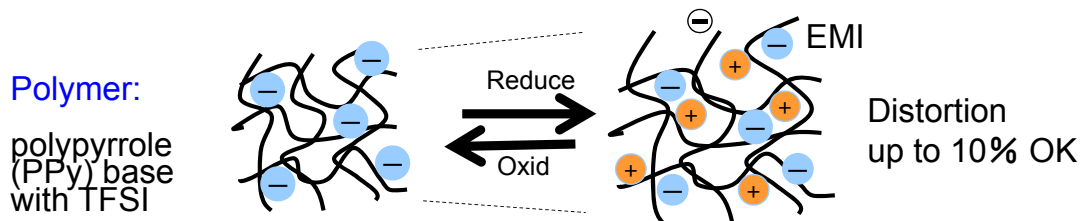
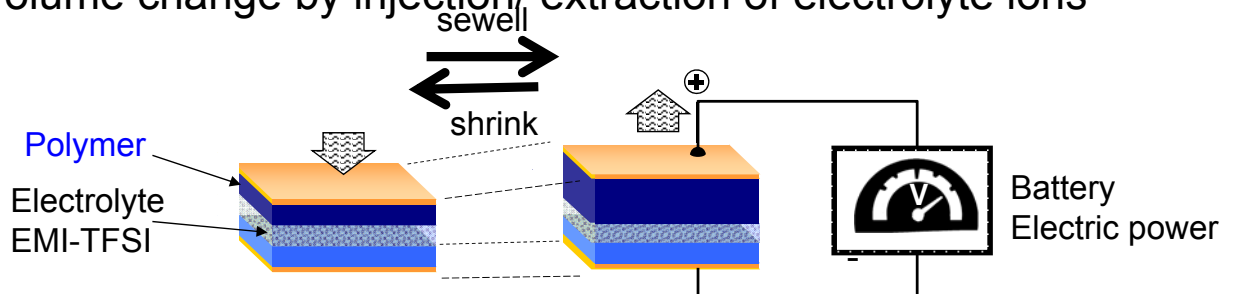


Panasonic ideas for life

Conductive Polymer Actuator

14

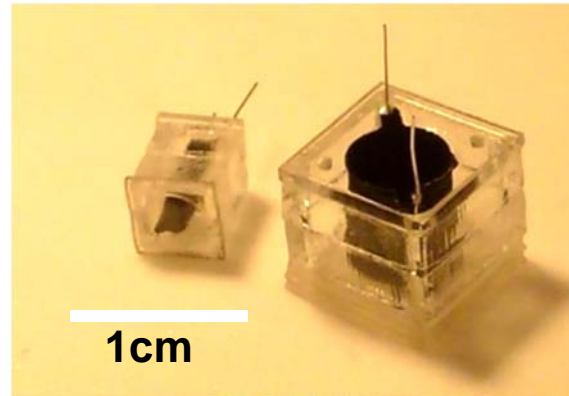
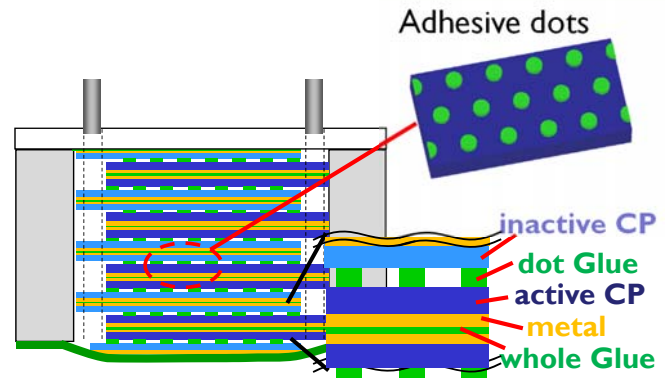
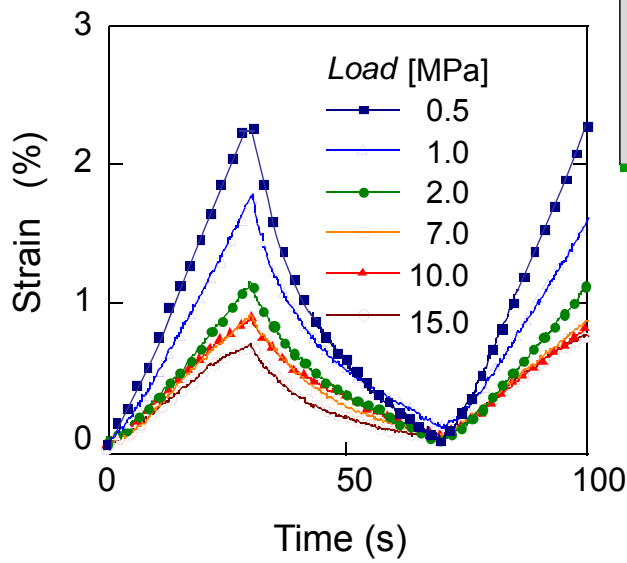
Operating principle:
volume change by injection/ extraction of electrolyte ions



Panasonic ideas for life

Polymer pump characterization

15

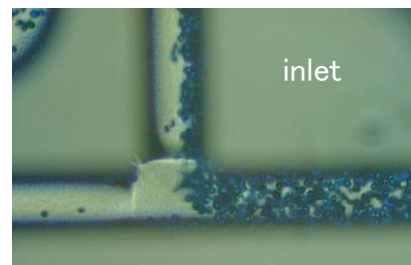
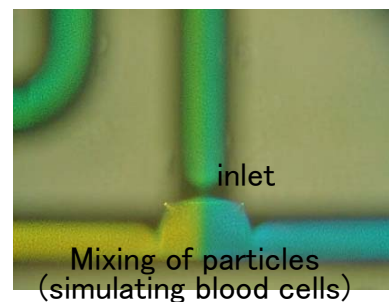
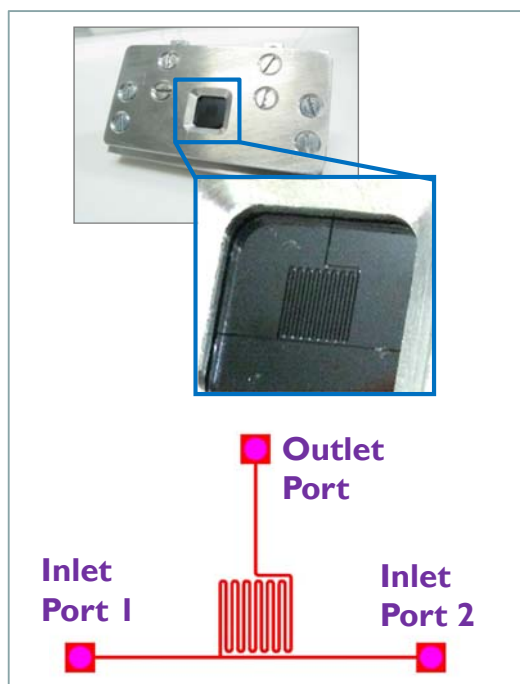


Panasonic Ideas for life

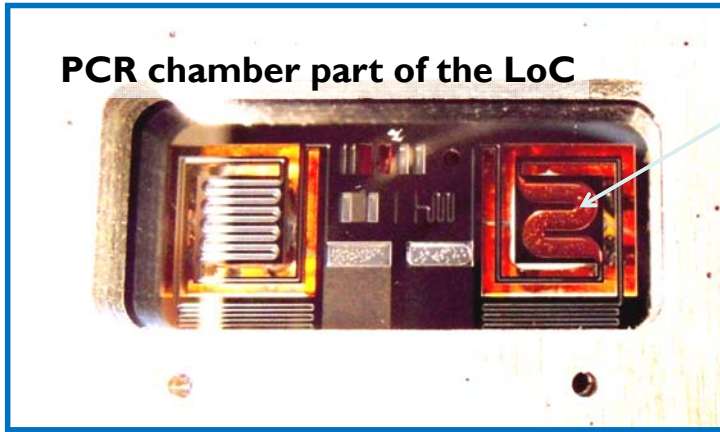
Mixers : characterization

16

Mixing of two fluids

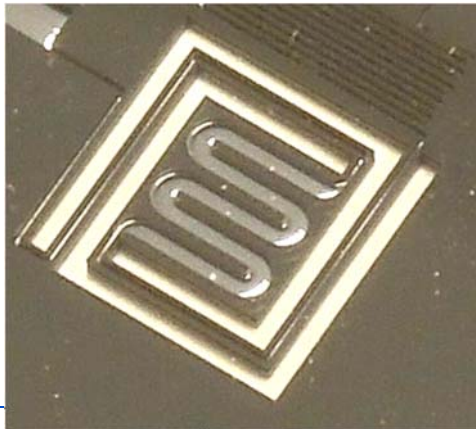


for life



PCR chamber part of the LoC

PCR chamber Filled with sample



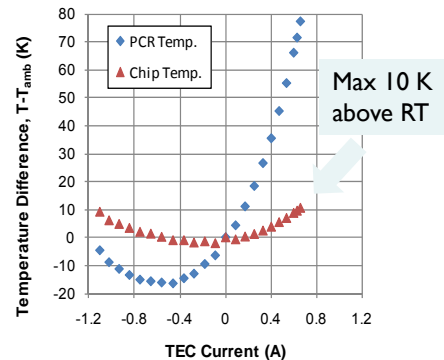
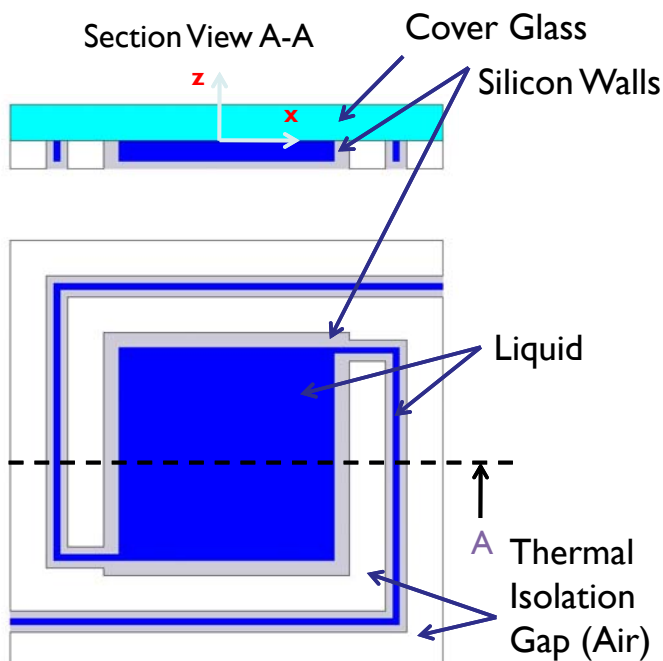
Thermal isolation is the key

Least heat current should be realized between substrate and PCR chamber during PCR cycle

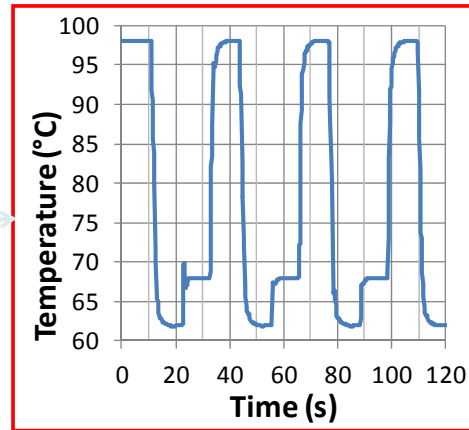
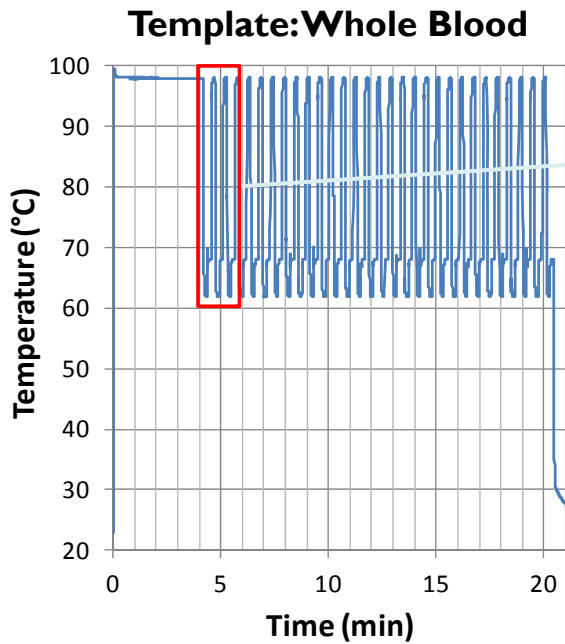
The chamber is isolated and connected only with the tiny micro-channel

On chip PCR: fabrication and thermal tests

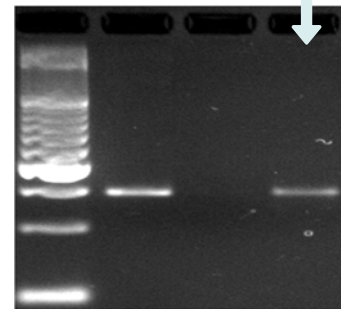
Thermal insulation is further improved by winding in/out channels around the cavity.



Steady-state temperature of the PCR chamber and bulk silicon substrate.



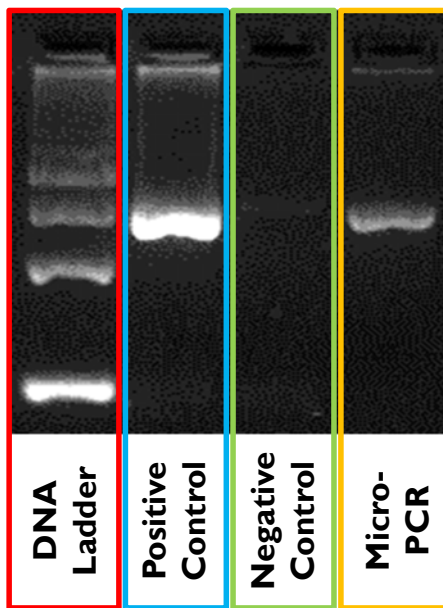
Micro-PCR result



➤ Successful micro-PCR amplification in less than 21 minutes -> 11 minutes.

SSD Amplification Tests (Human Genomic DNA)

Template: Human Genomic DNA (From Commercial Source)



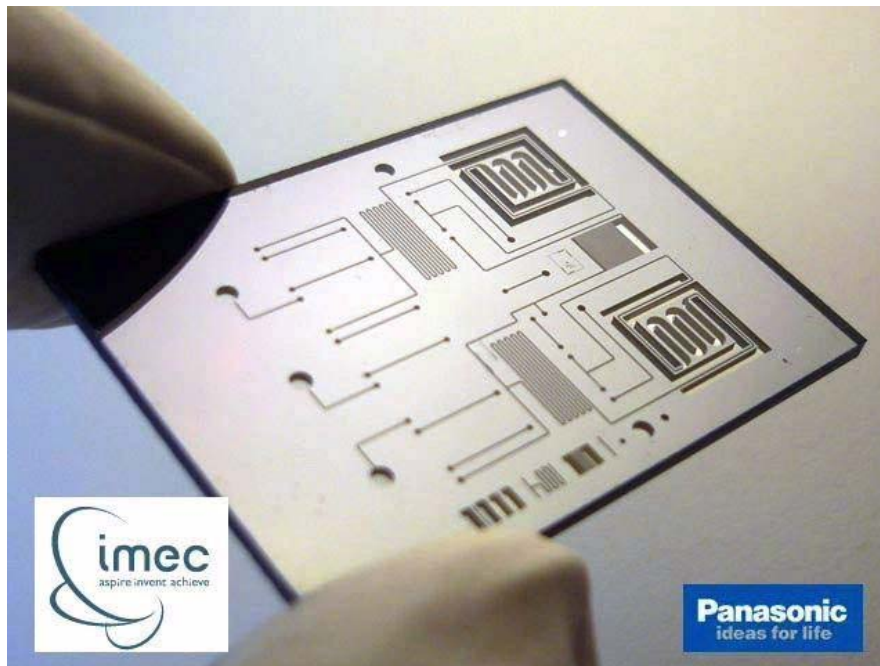
Commercial Tool SSD

Protocol

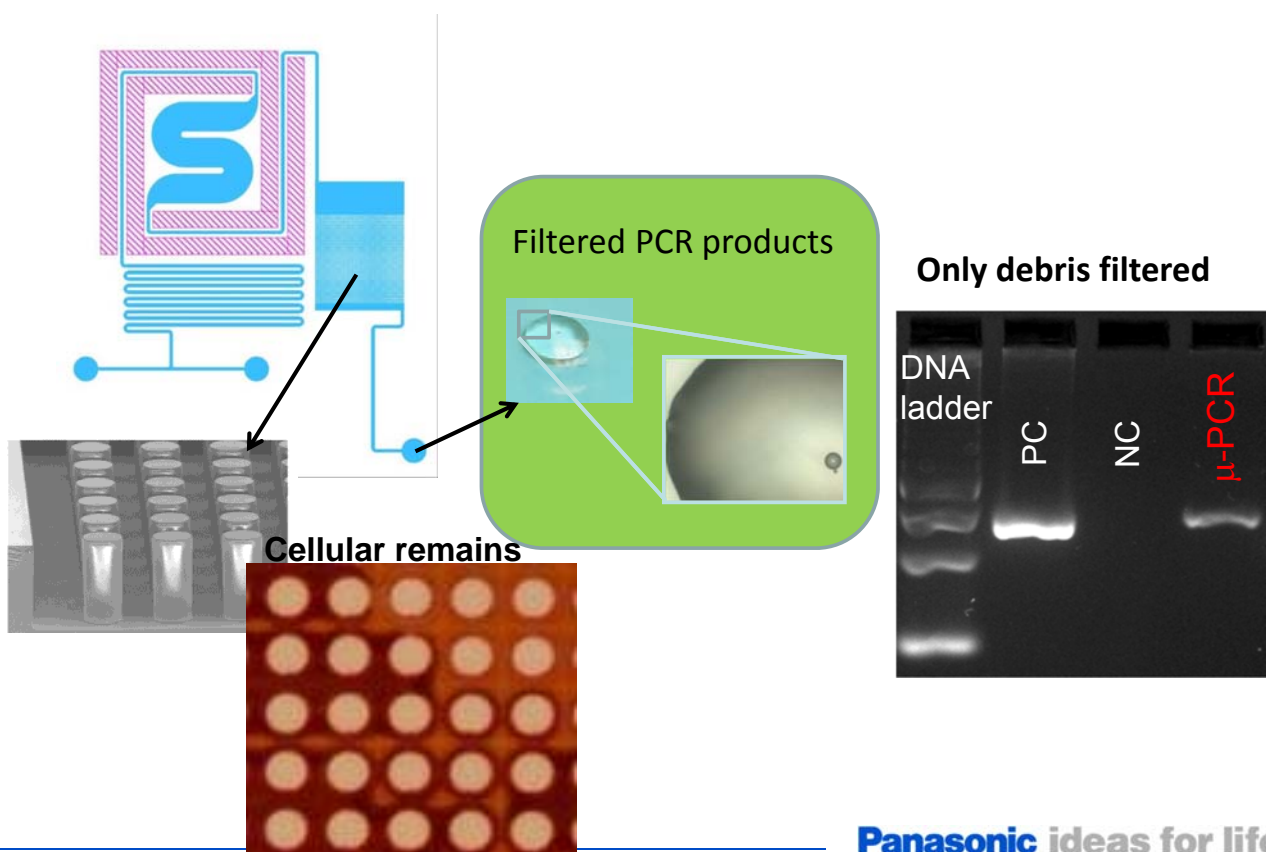
2X buffer KOD fx	5 μL
2 mM dNTP's	1 μL
10 μM Fw primer	1 μL
10 μM Rv primer	1 μL
KOD polymerase	0.4 μL
Water	1.1 μL
Template	0.5 μL
Total	10 μL
	(2 μL amplified in micro-PCR)

T anneal = 60° C
Cycles = 30

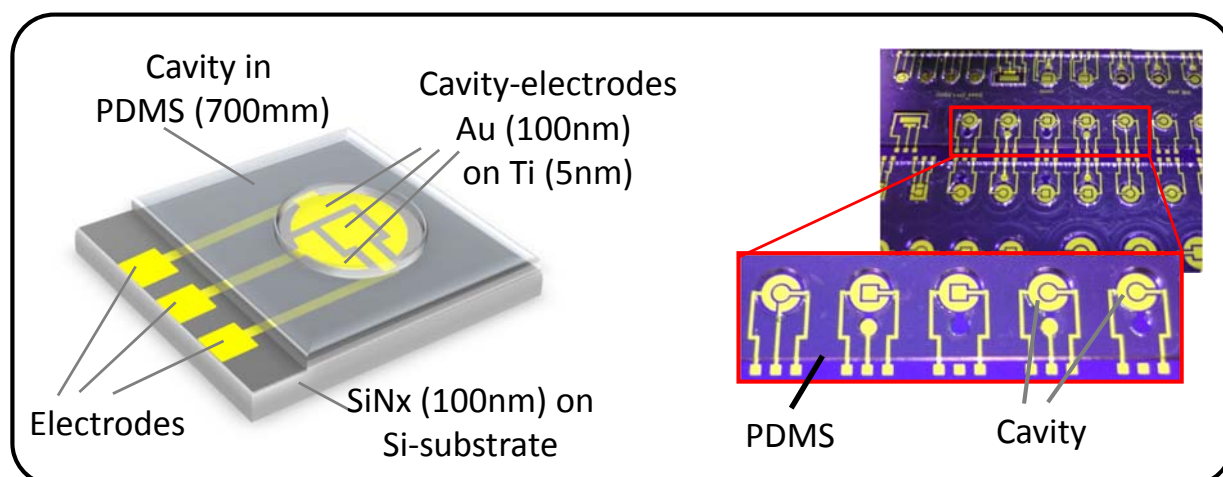
➤ Successful amplification of target fragment in micro-PCR
➤ Reproducibility can be improved



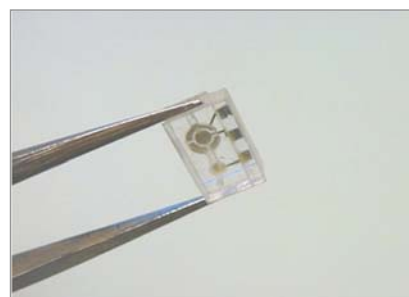
Coarse filter for debris filtration



The newly developed SNP sensor



- Photolithographic process for electrode
- Small and well-defined cavities realized by PDMS molding.
- Cavity volume: down to 0.5 μL

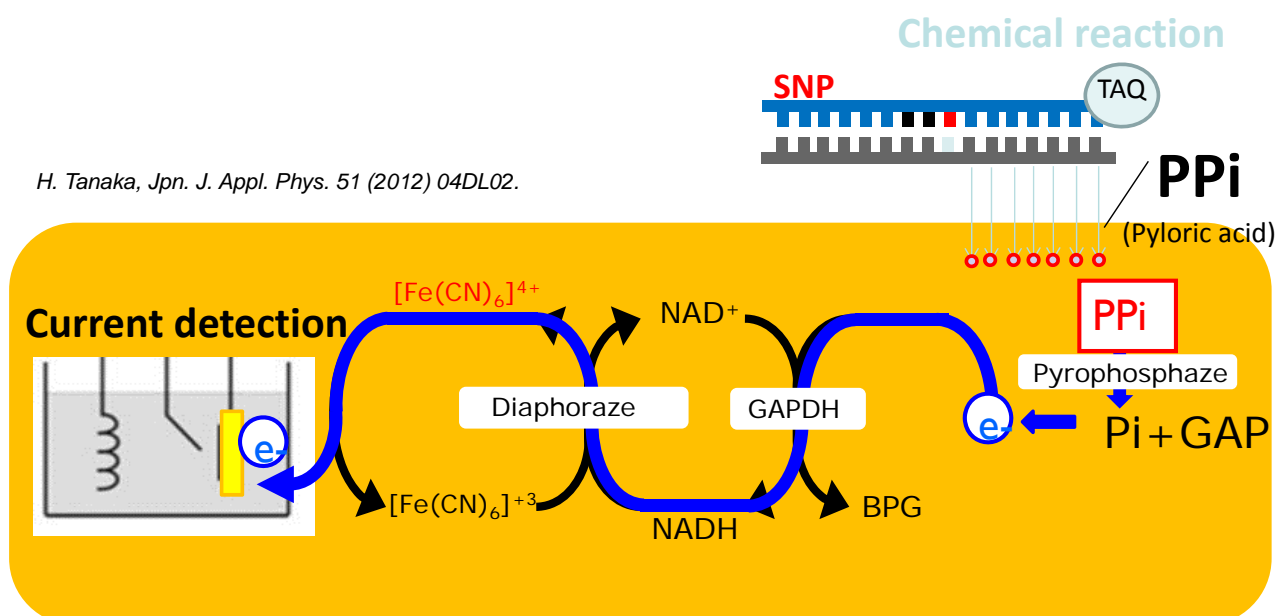


Panasonic ideas for life

Electrochemical SNP sensing

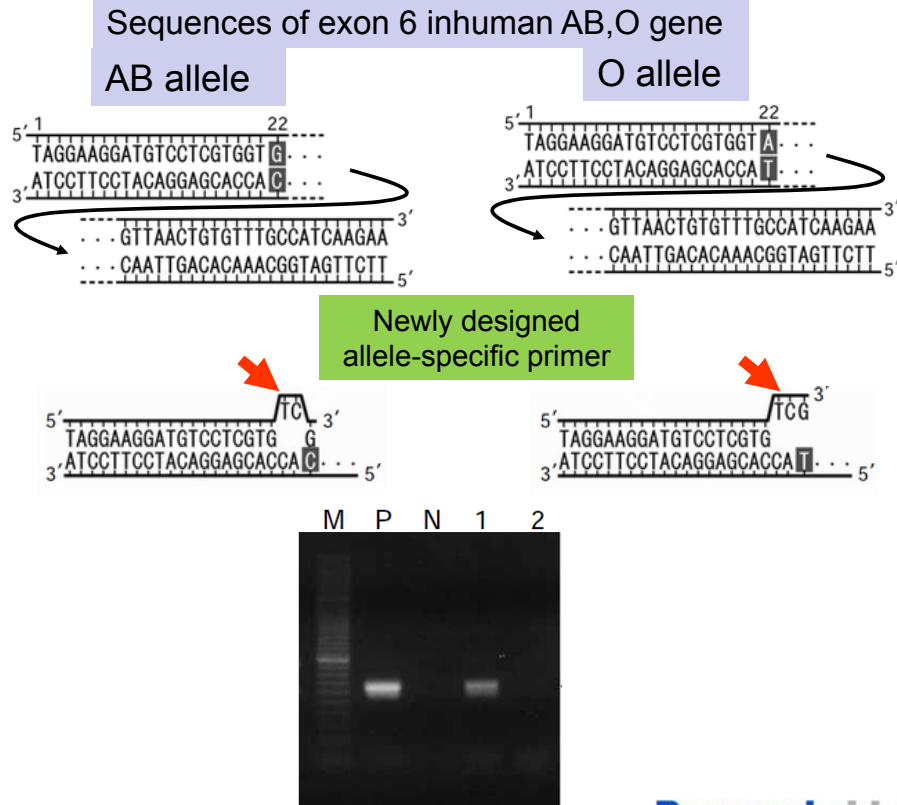
Electrochemical sensing of allele specific PCR products

H. Tanaka, Jpn. J. Appl. Phys. 51 (2012) 04DL02.



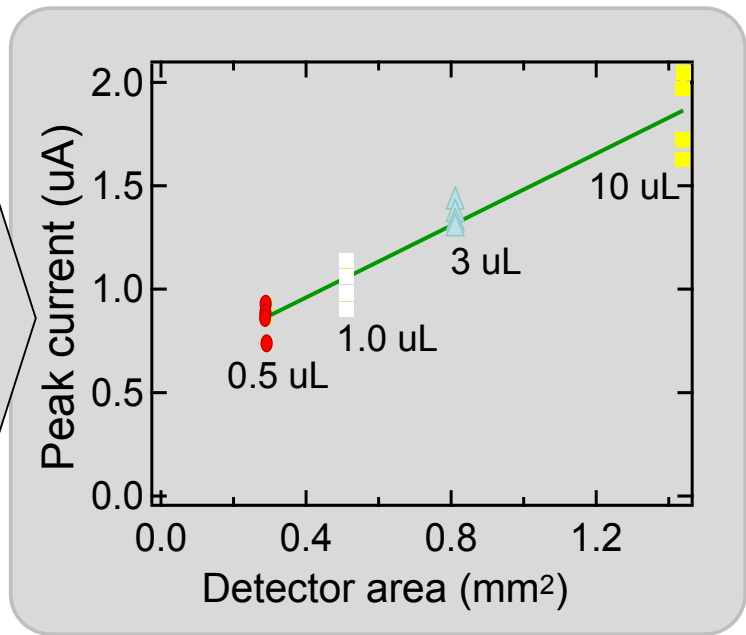
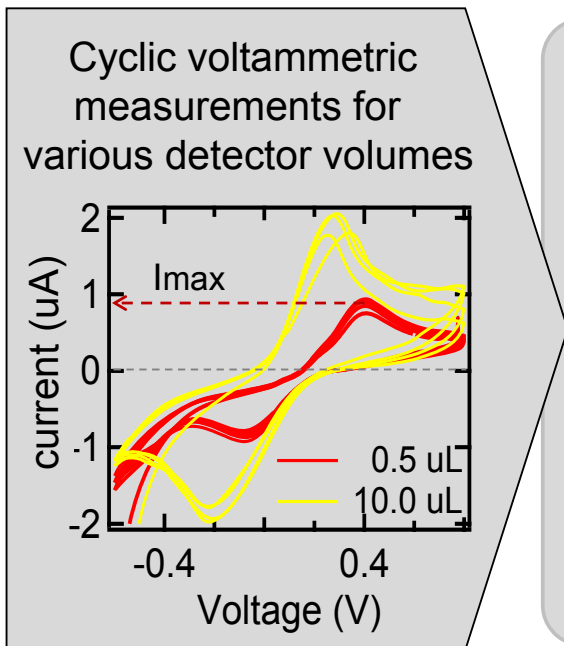
Panasonic ideas for life

ABO gene SNP detection



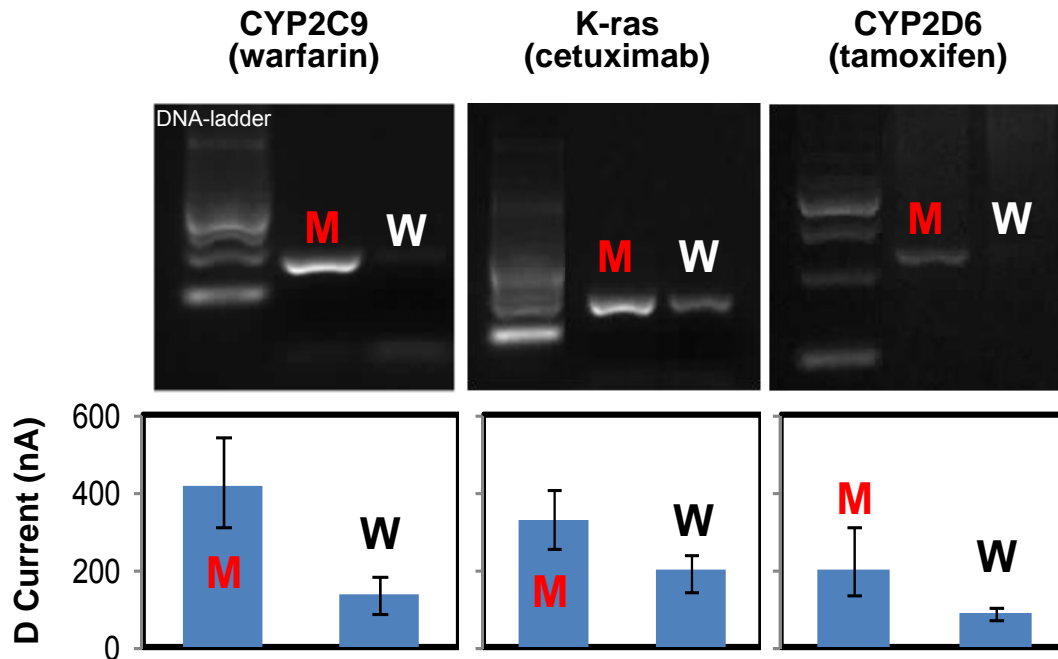
The newly developed SNP sensor

Detector is tested by using a ferricyanide solution.
 Molarity is similar to the one which will be obtained in real case later.



SNP detection results

27

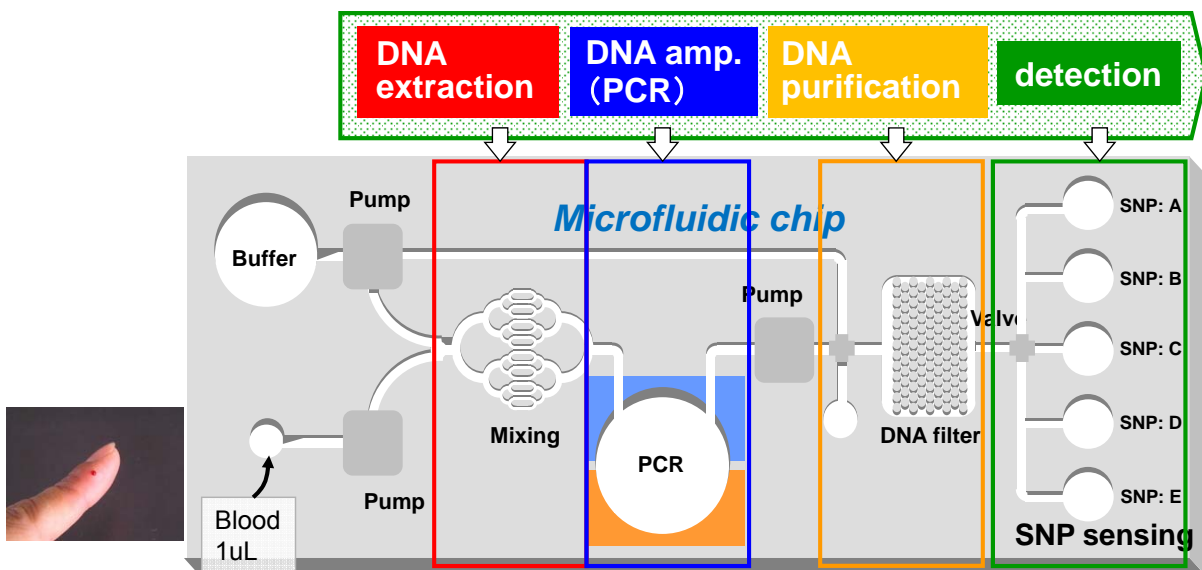


M: mutant = SNP exist
W: wild = no SNP

Panasonic ideas for life

SNP Detection chip

28



Rapid genotyping diagnostic on chip system

- Automated DNA extraction from blood
- Output diagnostic results within 2 hours

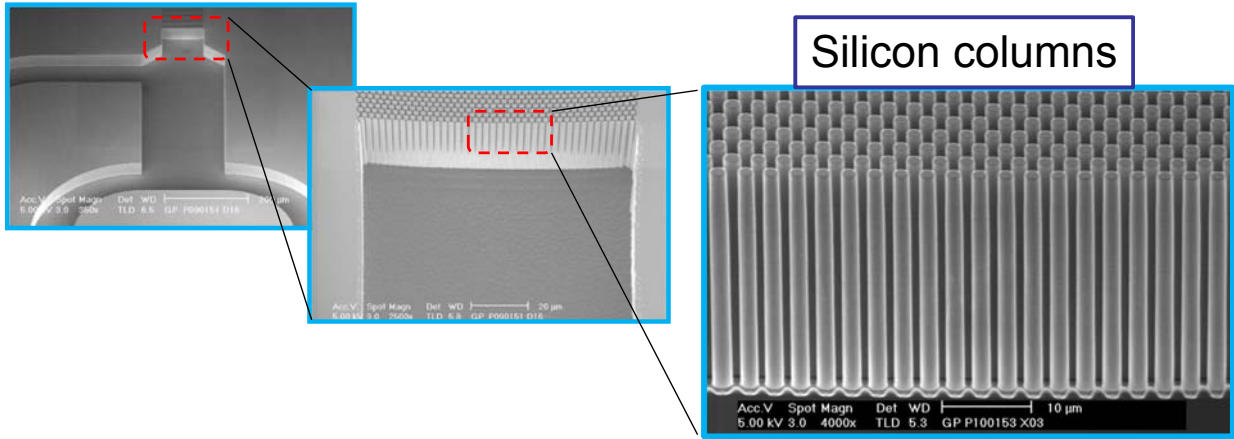
Panasonic ideas for life

The newly developed DNA filter

The highly precise structure for high resolution DNA filter

→

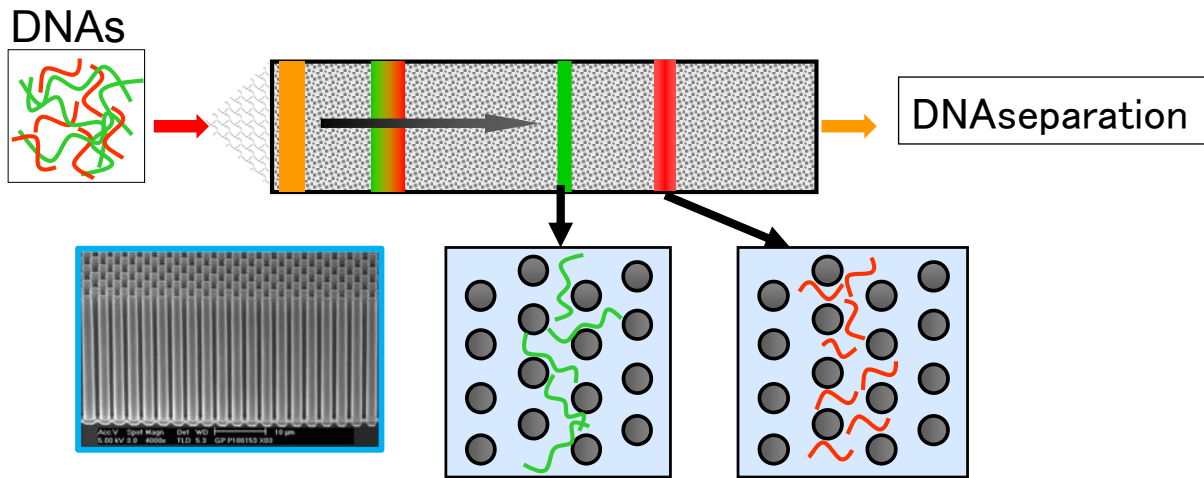
- DNA separation length reaches less than 50base pair.
- The separation can be achieve in several seconds.



DNA separation by IP-RP HLC (ion-pair reverse phase high performance liquid chromatography)

The newly developed DNA filter

DNAs are filtered through the Si pillar forest



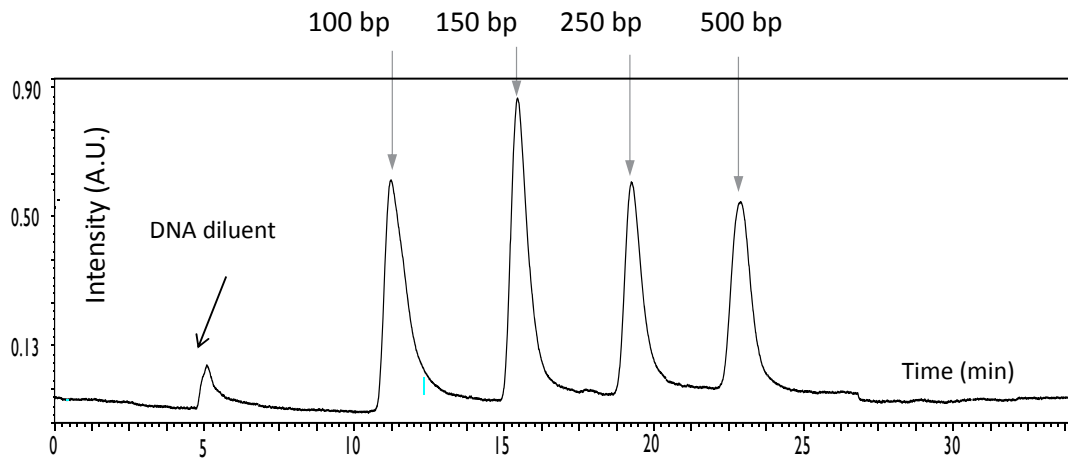
Silicon Pillar Array
Φ1μm Height 30μm
Interval 1μm

The shorter, the faster DNAs go through the filter.

The newly developed DNA filter

31

DNA separation on chip based on Ion-pair reversed phase chromatography
→ With gradient mobile phase (concentration is changing during filtering):

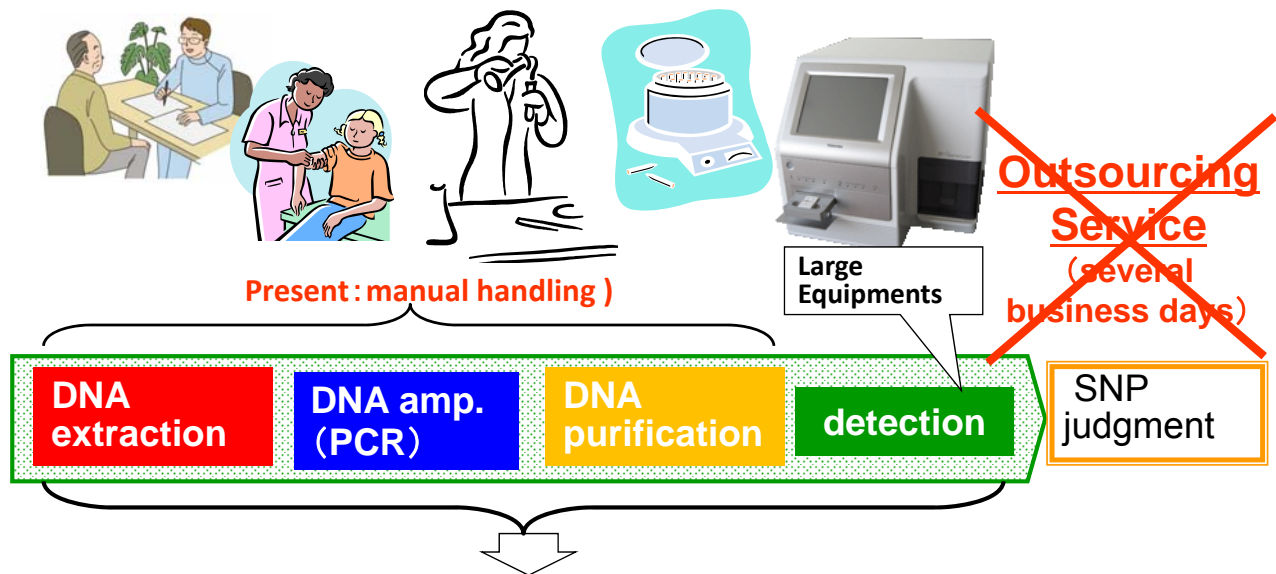


Clear separation and results are reproducible.
50 bp ladder and 10 bp ladder are separated on chip.

Panasonic ideas for life

Full automatic SNP detection LoC

32



Our target is SNP-detection from blood around 1 hour with small one-chip.

Panasonic ideas for life